

5800

South
Quebec



5800

South Quebec

The Building

Featuring 163,647 SF of Class A Office space to be customized for your biotech lab, tech and biotech manufacturing, medical, health or veterinary treatment office.

Located in Denver's Southeast Market near highly desirable executive neighborhoods, multi-family residences, shopping, dining and recreation. Easily accessed from I-25, Quebec Street and the Orchard Light Rail Station.

1,000 - 163,647 SF

Rentable Area

25,953 – 52,281 SF

RSF Floorplates

1980 | 2025

Year Built | Occupancy

708 Spaces
(281 Covered)

Parking





5800

South
Quebec

Building Details

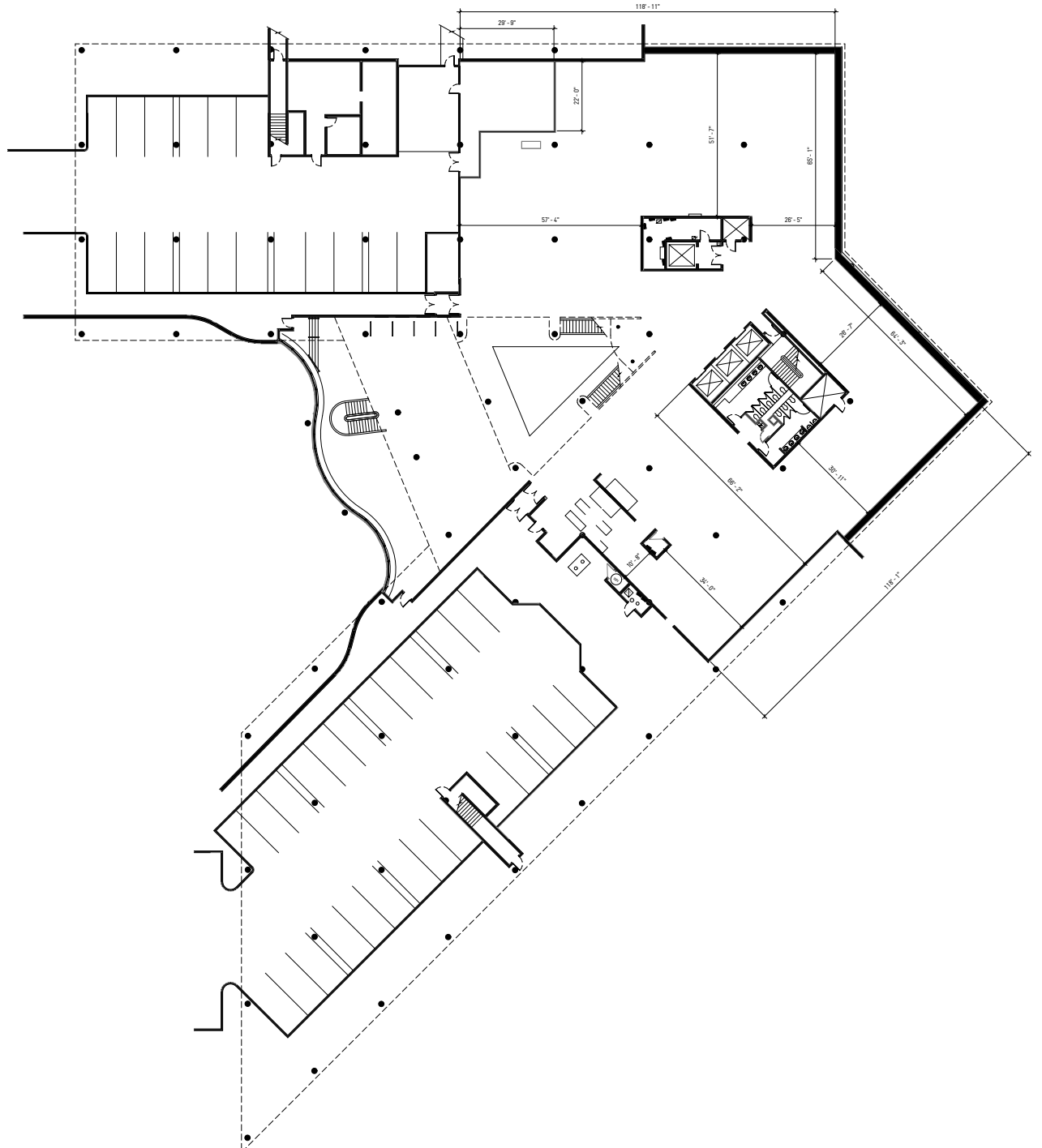
- Unobstructed mountain views
- 10' standard finish ceiling
- 3,000 amps
 - Backup power available
- HVAC to tenant's specs
- 24/7 key card access
- Fully sprinklered
- Building Signage for large SF user
- Elevator access on each floor



5800

South
Quebec

Floor Plans



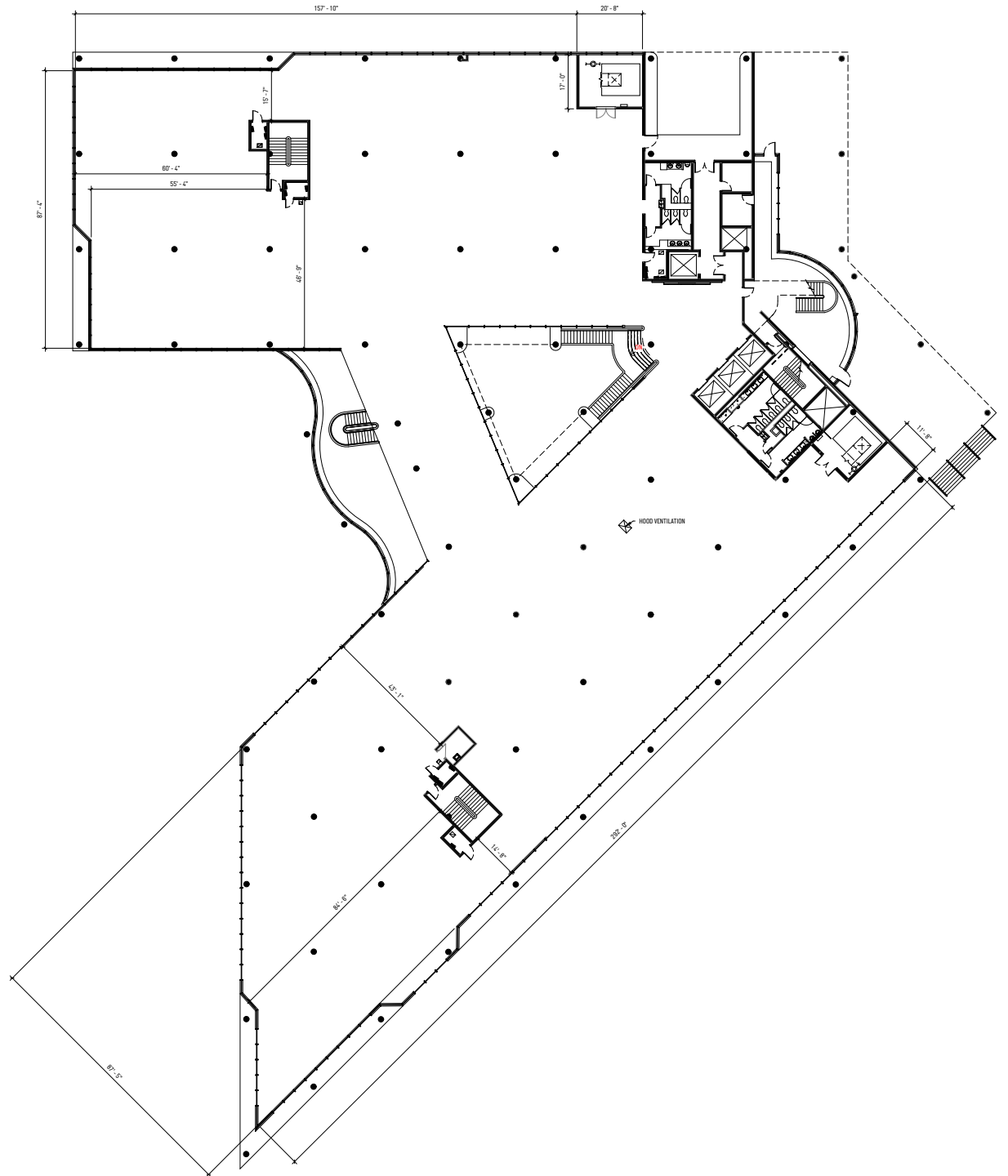
25,953 SF

Atrium

5800

South
Quebec

Floor Plans



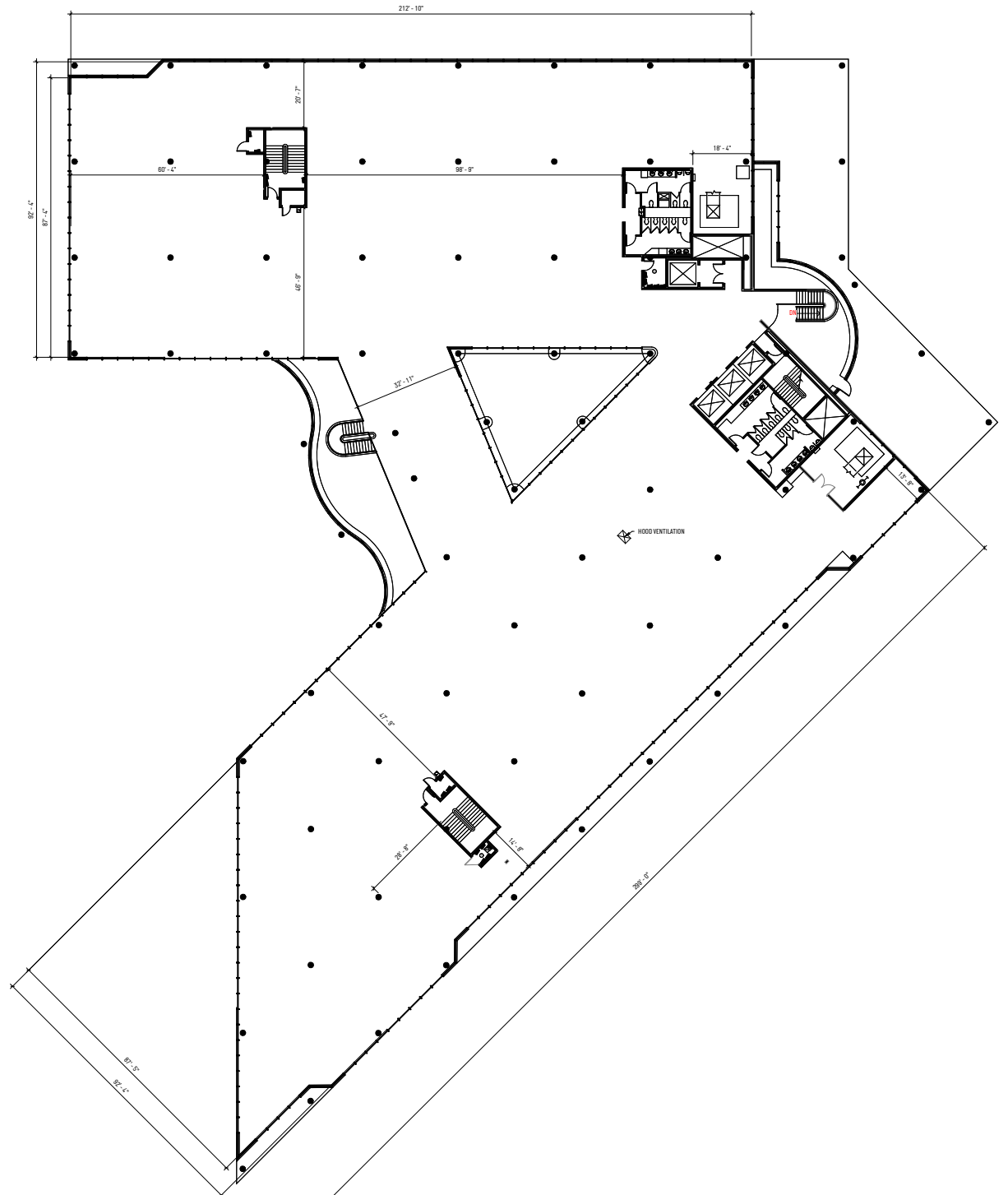
41,349 SF

Floor 1

5800

South
Quebec

Floor Plans



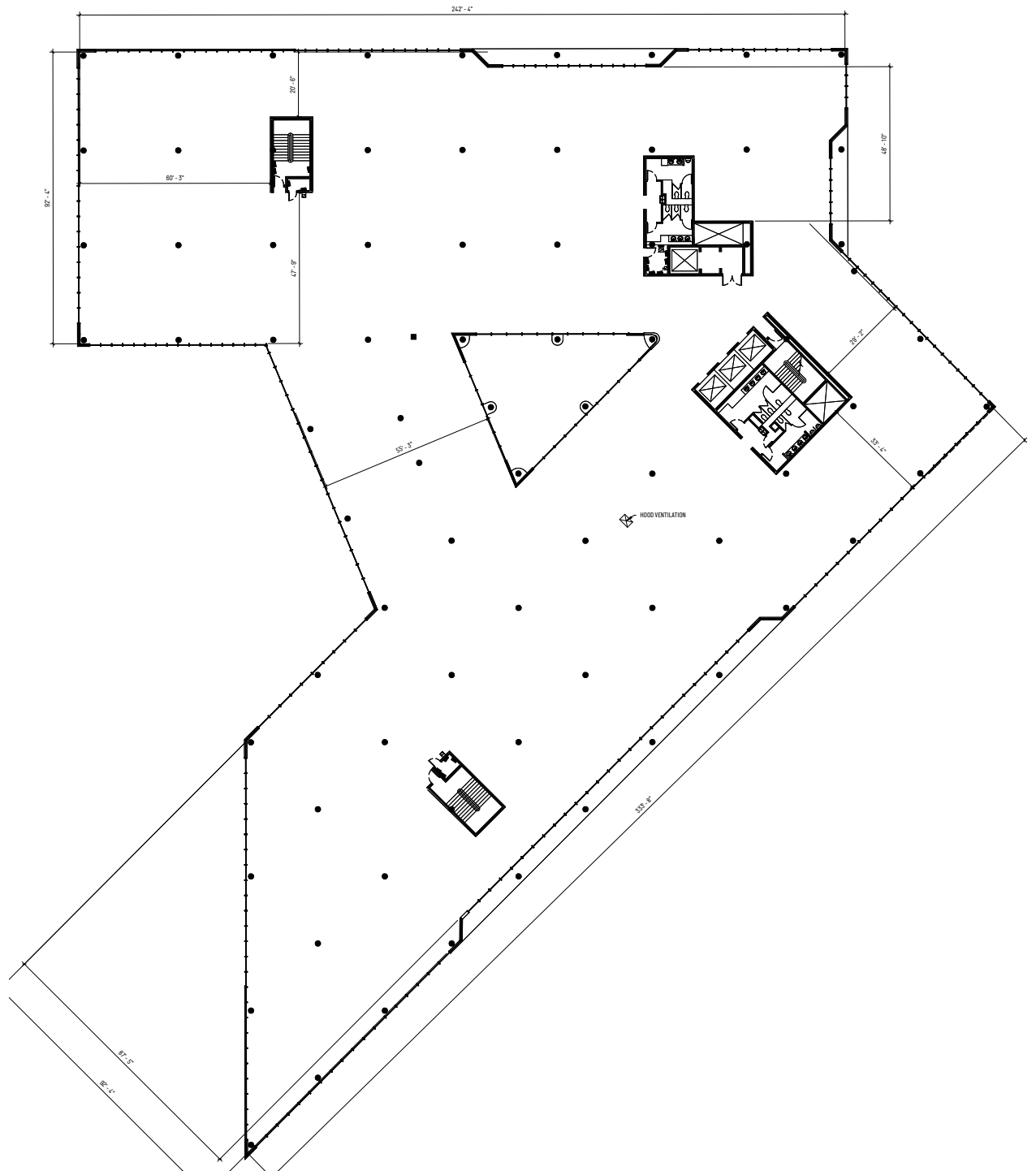
44,064 SF

Floor 2

5800

South
Quebec

Floor Plans



52,281 SF

Floor 3

5800

South Quebec

Aerial

Local Amenities

- Across from Club Greenwood (formerly Greenwood Athletic Club)
- 5-minute walk to Orchard light rail station
- Close proximity to The Landmark with high end restaurants and retail
- Ease of access off of I25 for commuting employees and patients/customers



5800

South Quebec

Demographics

1 MILE

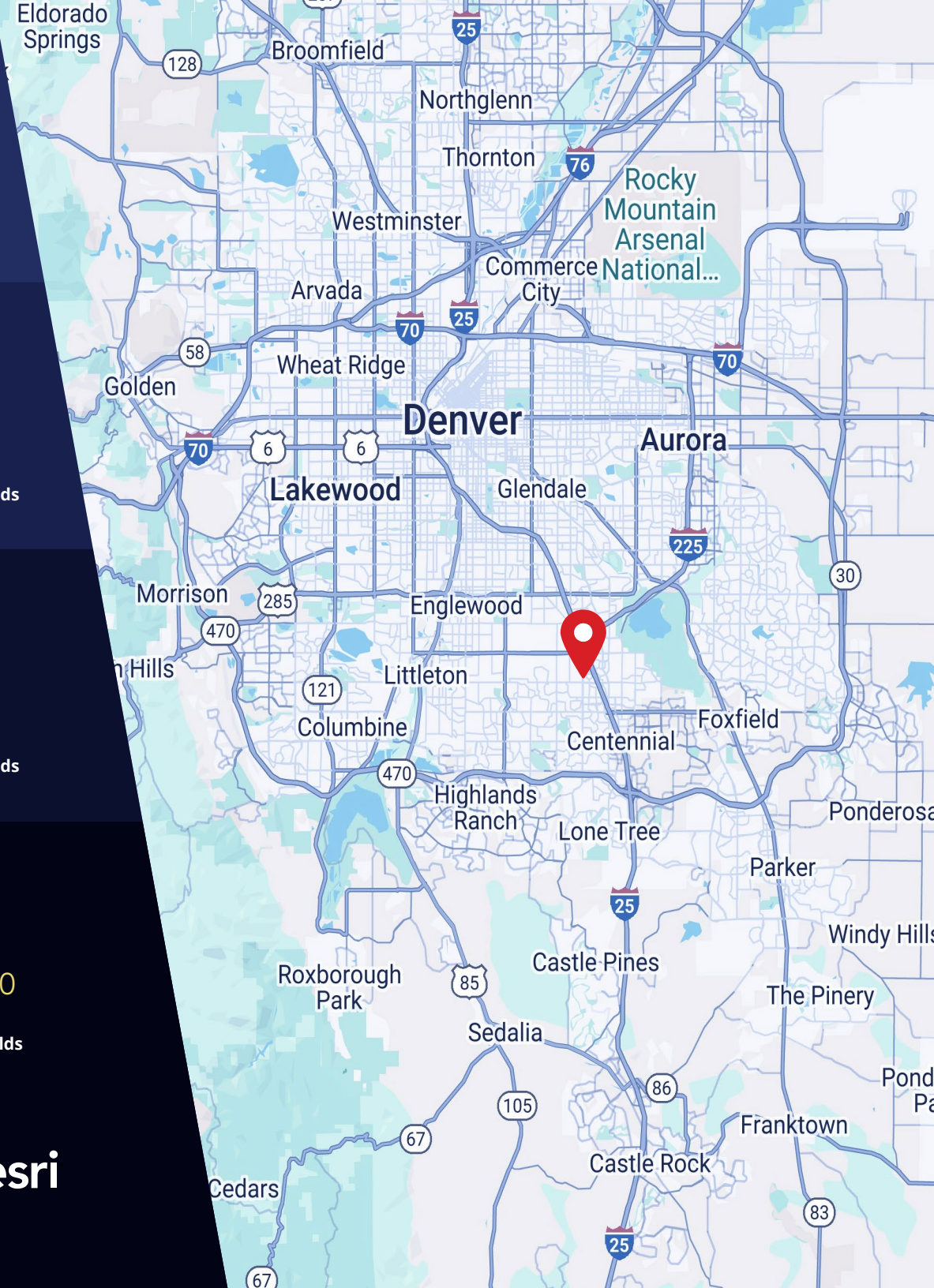
10,630 Population	63,623 Total Daytime Population	\$162,126 Average Household Income	5,000 Total Households
----------------------	---------------------------------------	--	------------------------------

3 MILES

101,660 Population	179,653 Total Daytime Population	\$179,531 Average Household Income	43,313 Total Households
-----------------------	--	--	-------------------------------

5 MILES

276,393 Population	387,602 Total Daytime Population	\$155,695 Average Household Income	118,480 Total Households
-----------------------	--	--	--------------------------------



> **Want more?** Contact us for a complete demographic, foot-traffic, and mobile data insights report.

SOURCE 



1875 Lawrence Street, Suite 850
Denver, CO 80202
303.572.18000

Patrick McGlinchey
Vice President
patrick.mcglinchey@srsre.com
210.303.3149

Justin Gregory
Vice President
justin.gregory@srsre.com
303.803.7170

Jack Lazzeri
Senior Associate
jack.lazzeri@srsre.com
303.295.4841



© SRS Real Estate Partners

The information presented was obtained from sources deemed reliable; however SRS Real Estate Partners does not guarantee its completeness or accuracy.